

# Kaadas

## L7 Series User Manual

### 1 Cautions

This section contains important information to ensure the user's safety and prevent potential damage to property. Please, read this section carefully and use the product accordingly.

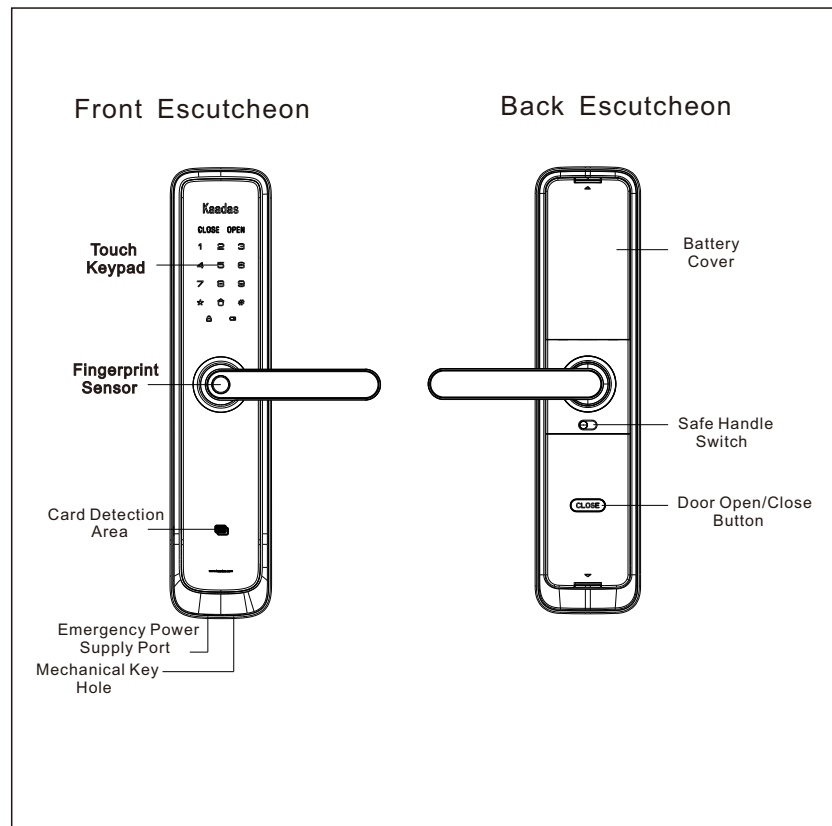
#### NOTES

- Master PIN Code: Default Master PIN code is [12345678], please modify it immediately.
- User PIN Code: It can be 6-12 digits number. You can register and up to 10 groups.
 

User Number	User Type	Notes
00-04	Normal User	* Permanent
05-08	Temporary User	* Invalid after using one time or invalid in safety mode
09	Duress User	* Working with wireless module when duress event occurs
- Card: It is optional. Maximum capacity is 100 with user number [00-99].
- Fingerprint: Maximum capacity is 100 with user number [00-99].
- Be sure to correctly match the poles (+/-) when installing the batteries. Install the batteries with the correct poles (+/-).
- Replace all batteries immediately after they run out of power, and never mix new batteries with used ones.

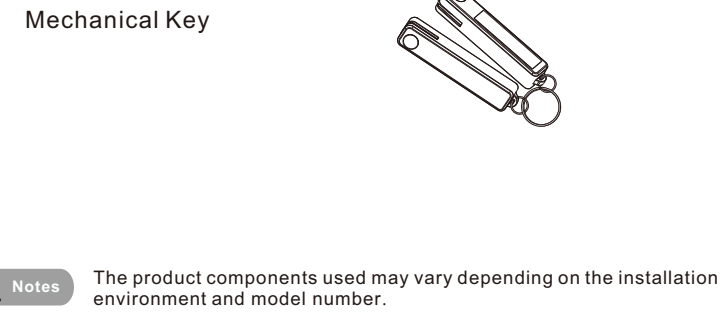
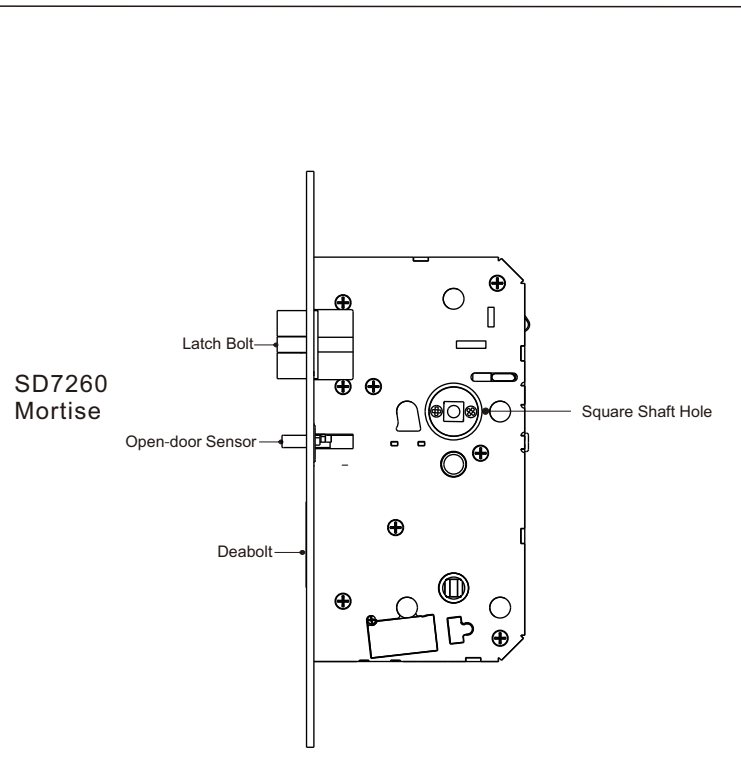
Model	Open Door Index	Menu Table	Menu Access
L7-5	PIN Code - 6.1.1 Fingerprint - 6.1.2 Card - 6.1.2	5.1 Enroll User PIN Code	Master PIN Code
		5.2 Enroll Fingerprint	
		5.4 Delete User PIN Code	
		5.5 Delete Fingerprint	
		5.7 Opening Mode Setting 5.9 Change Master PIN Code	
L7-2	PIN Code - 6.1.1 Card - 6.1.2	5.1 Enroll User PIN Code	Master PIN Code
		5.3 Enroll Card	
		5.4 Delete User PIN Code	
		5.6 Delete Card	
		5.7 Opening Mode Setting 5.9 Change Master PIN Code	

#### Overview



www.kaadas.com

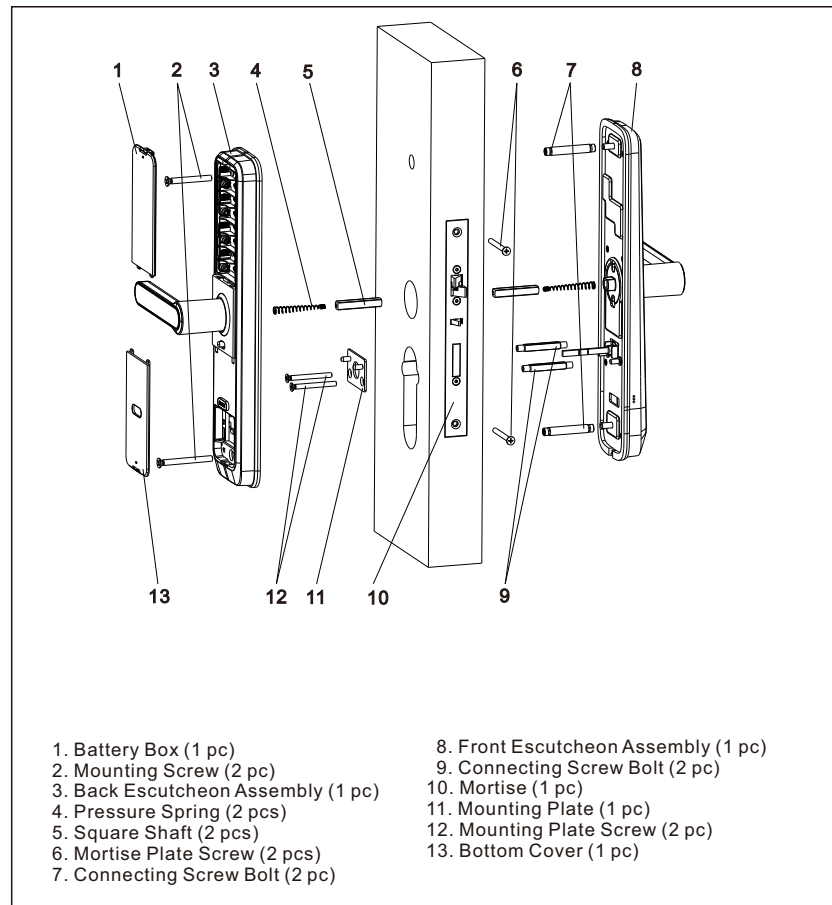
\* The contents of this user manual are subject to change without prior notice to the user in order to enhance performance of the product.



### 2 Package Content and Explosive View

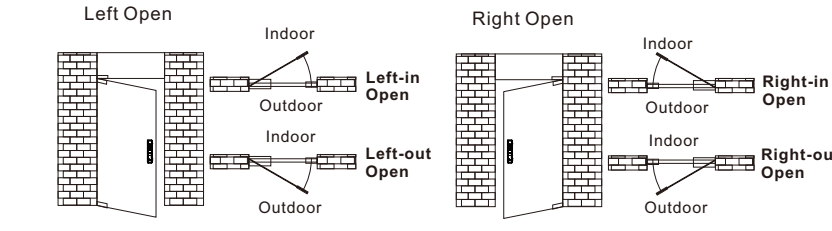
This described package content is for reference only, the real products should be considered as final. If some components lost, please check with the sellers.

Number	Item Name	Quantity	Remark
1	Front escutcheon with rubber gasket	1	
2	Back escutcheon with rubber gasket	1	
3	Mortise	1	
4	Mounting Accessory Kit	1	
5	User Manual	1	
6	Micro-fiber Wiper	1	
7	Warranty Card	1	
8	The Seal Box of Key	1	2 Pieces Mechanical Key
9	Strike Plate Assembly	1	
10	Installation Template	1	
11	Mounting Plate	1	
12	RFID Card	2	
13	Network Module	1	Optional

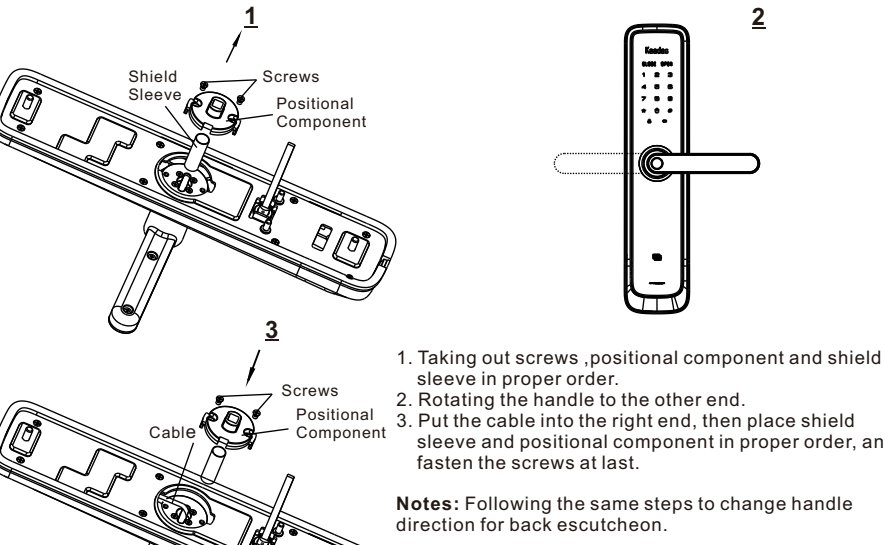


### 3 Before Installation

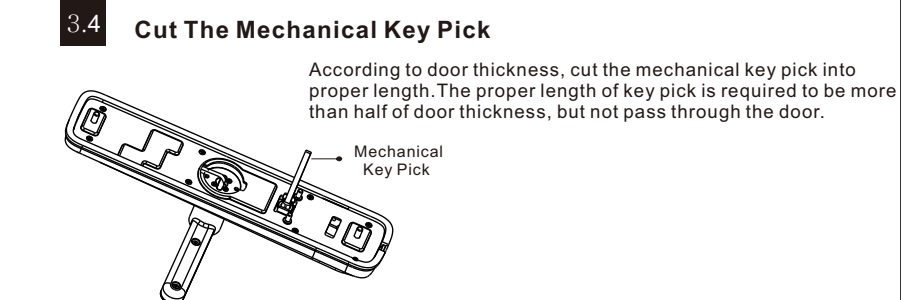
**3.1 Check Door Open Direction**  
This product fits for all open direction - Left-in/Left-out/Right-in/Right-out.



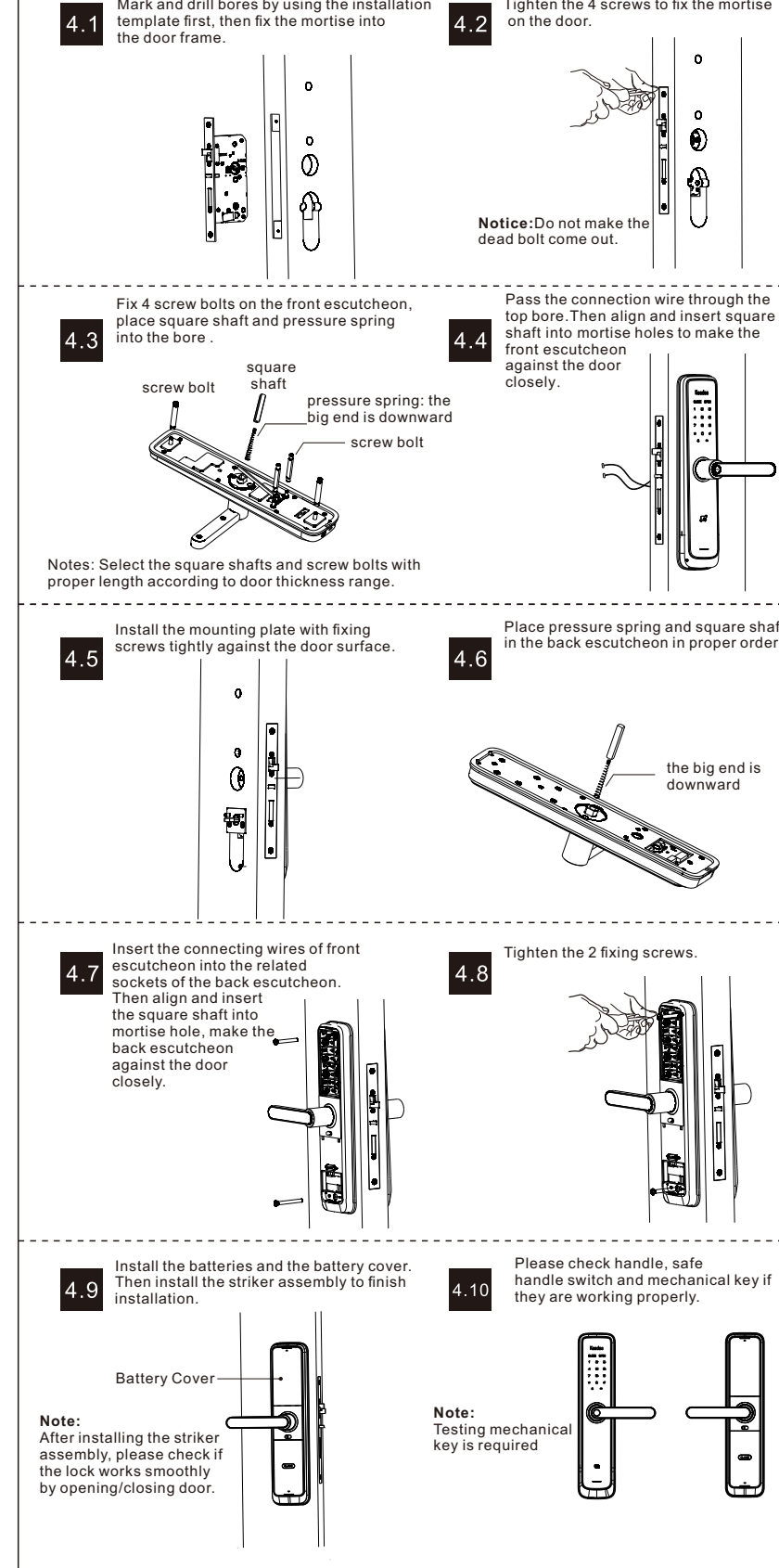
**3.2 Change Handle Direction**  
Please fix the screws in proper locations according to below diagram in different open direction.



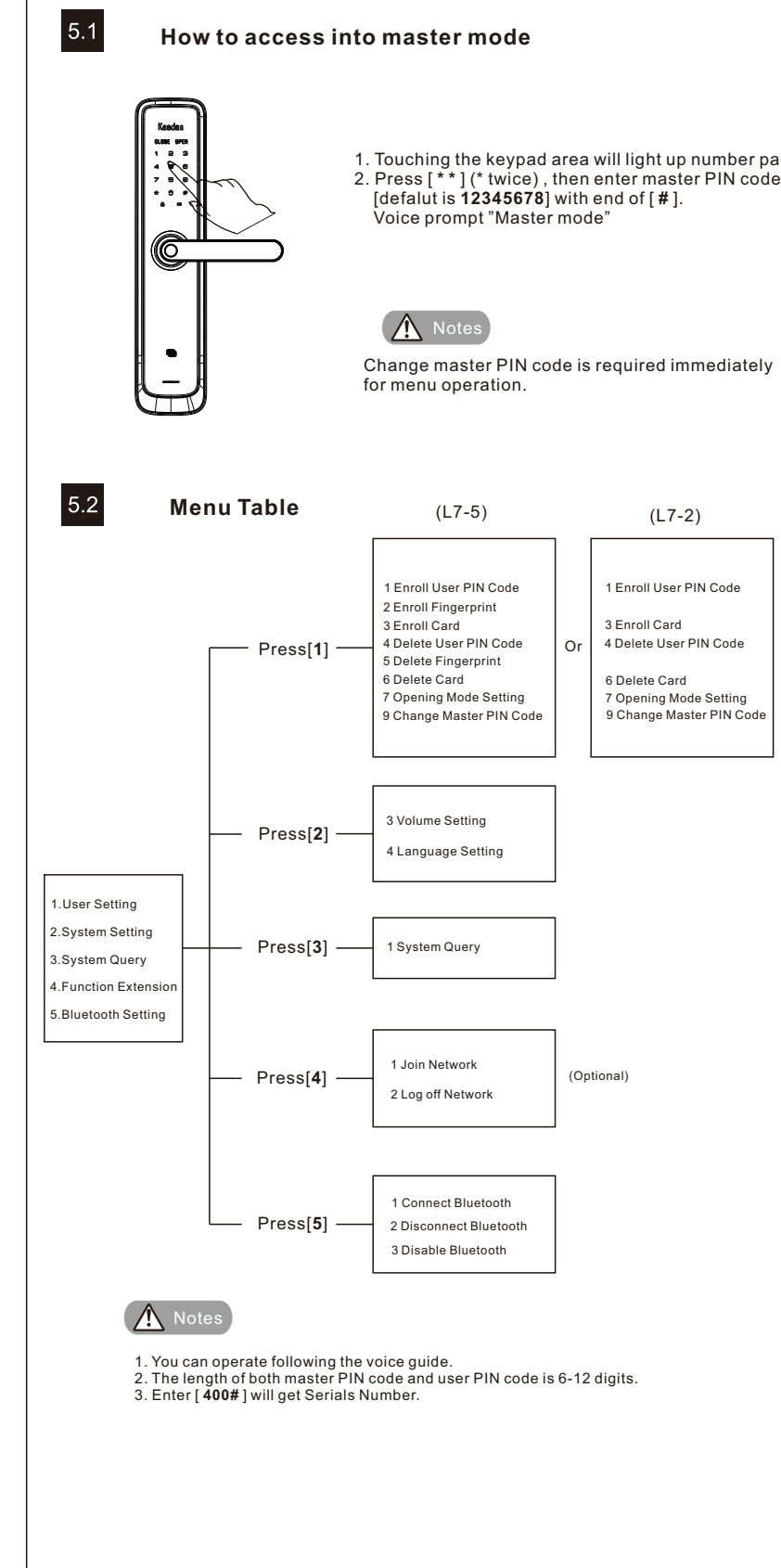
**3.3 Check Door Thickness**  
The standard mounting accessory kit is used for the door thickness of 30 - 60mm.



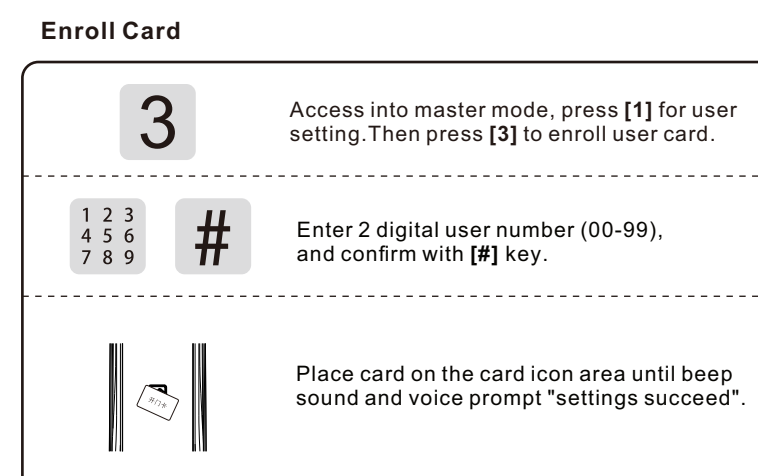
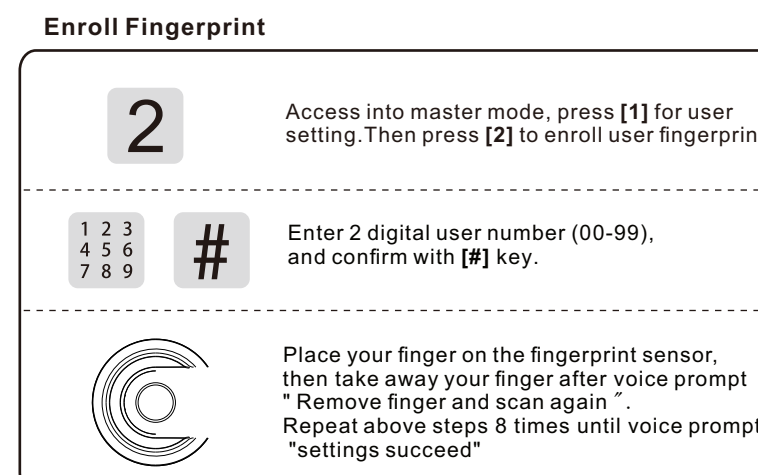
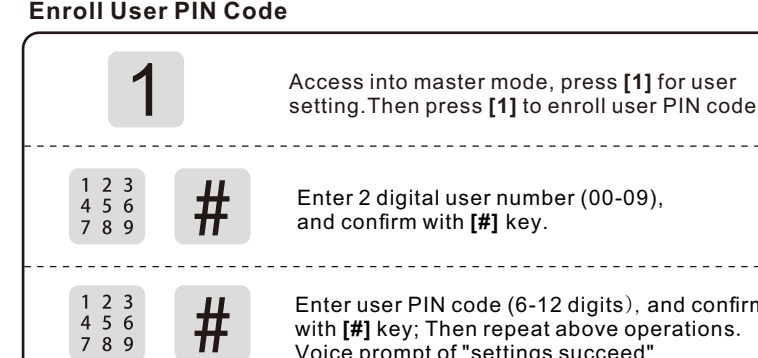
### 4 Installation Steps



### 5 How To Program



### User Setting



纸张: 128g铜版纸双面单黑印刷

工艺: 风琴7折, 折后尺寸125\*265mm

#### Delete User PIN Code

**4** Access into master mode, press [1] for user setting. Then press [4] to delete user PIN code.

**1** Press [1] to delete single user  
Enter 2 digital user number (00-99), and confirm with [#] key. Voice prompt of "Deletion succeeded"

**2** Press [2] to delete all users  
Voice prompt of "Deletion succeeded"

#### Delete User Fingerprint

**5** Access into master mode, press [1] for user setting. Then press [5] to delete user fingerprint.

**1** Press [1] to delete single user  
Enter 2 digital user number (00-99), and confirm with [#] key. Or Place the related finger on the fingerprint sensor to delete until one beep sound. Voice prompt of "Deletion succeeded"

**2** Press [2] to delete all users  
Voice prompt of "Deletion succeeded"

#### Delete User Card

**6** Access into master mode, press [1] for user setting. Then press [6] to delete user card.

**1** Press [1] to delete single user  
Enter 2 digital user number (00-99), and confirm with [#] key. Or Place the related RF card on the card icon area to delete until one beep sound. Voice prompt of "Deletion succeeded"

**2** Press [2] to delete all users  
Voice prompt of "Deletion succeeded"

#### Opening Mode Setting

**7** Access into master mode, press [1] for user setting. Then press [7] for opening mode setting.

**1** Press [1] for normal mode (single verification), which means opening by PIN code or fingerprint or card.

**2** Press [2] for security mode (double verification), which means opening by PIN code+fingerprint or PIN code+card or fingerprint+card

**Notes** In security mode, to delete all users is prohibited

#### Change Master PIN Code

**9** Access into master mode, press [1] for user setting. Then press [9] to change master PIN code.

**#** Enter new master PIN code (6-12 digits) and confirm with [#] key. Then repeat above operations. Voice prompt of "settings succeed"

**Notes** Change master PIN code is required immediately after installation.

#### System Setting

#### Volume Setting

**2 3** Access into master mode, press [2] for system setting. Then press [3] for volume setting.

**1** Press [1] for voice mode.

**2** Press [2] for mute mode, excluding alarm and menu operation.

#### Language Setting

**2 4** Access into master mode, press [2] for system setting. Then press [4] for language setting.

**1** Press [1] for Chinese Voice.

**2** Press [2] for English Voice.

#### Bluetooth Setting

**5** Access into master mode, press [5] for bluetooth setting.

**1** Press [1] to connect bluetooth.

**2** Press [2] to disconnect bluetooth.

**3** Press [3] to disable bluetooth. After that, press [1] to enable bluetooth.

#### System Query

**3** Access into master mode, press [3] for system query.

**1** Press [1] to get unique Serials Number.

## 6 How To Use

### 6.1 Normal Mode

#### 6.1.1 Open door by PIN code

1. Touch pad screen by palm to lighten keypad  
2. Enter the enrolled PIN code with end of [#]. Voice prompt "door opened"  
3. Push or Pull handle to open the door

**Notes** The random numbers can be added before and after the real PIN code, this prevents the user PIN code from being exposed. The maximum length is 32 digits.

#### 6.1.2 Open door by Fingerprint

1. Place the enrolled finger properly on the fingerprint sensor area until one beep sound and voice prompt "door opened"  
2. Push or Pull handle to open the door

#### 6.1.3 Open door by Card

1. Place the enrolled card properly on the card icon area until one beep sound and voice prompt "door opened"  
2. Push or Pull handle to open the door

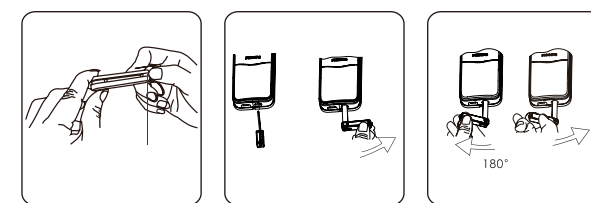
### 6.2 Security Mode

In security mode, double verification is required for opening door.

1. PIN Code + Fingerprint  
2. PIN Code + Card  
3. Fingerprint + Card

### 6.3 Open door by mechanical key

In case of forgetting PIN code, battery run out or system error; Mechanical key is used to open door as backup mode.



Insert the key into key hole and rotate it with proper angles. Then rotate the handle to open the door

### 6.4 Auto /Manual Mode

1. Taking out battery cover to find the A/M switch.  
2. [A] means auto mode: when door is closed, the deadbolt will be driven out automatically, then door will be in locked status.  
3. [M] means manual mode: when door is closed, the deadbolt will not be driven out, then the door will be in unlocked status.

**Notes** In manual mode, once the door is closed, please verify user fingerprint / PIN code / card to lock the door from outside.

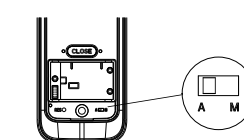
### 6.5 CLOSE button

1. Click [CLOSE] button to lock the door.  
2. Double click [CLOSE] button to open the door.  
3. Long press [CLOSE] button to double lock the door. The privacy code will be enabled, only Master PIN code and key can open the door from outside. User PIN code / Fingerprint / Card is prohibited.

### 6.6 Locking Operation

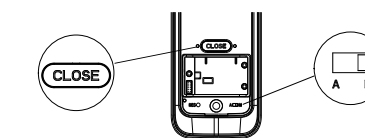
#### 6.6.1 Auto locking

In auto mode, door will be locked automatically in 1.5 seconds after closing. Voice prompts "door closed"



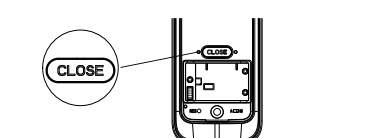
#### 6.6.2 Manual locking

In manual mode, click [CLOSE] button to lock the door from inside or verify user fingerprint / PIN code / card to lock the door from outside. Voice prompts "door closed"



#### 6.6.3 Double locking

When door is locked, long press [CLOSE] button to double lock the door. Voice prompts "Inside deadlock enabled"



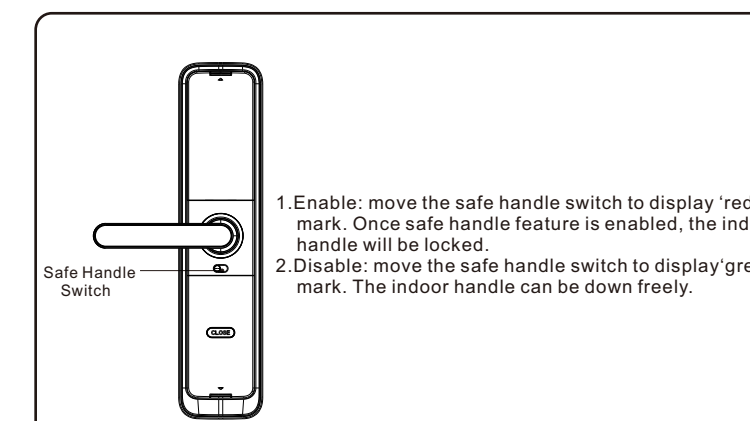
**Notes** If incorrect fingerprint/PIN code/card are attempted 10 times in a row, the related verification method will be lockedout for 5 minutes. In this case, please use the alternative method to open the door.

### 6.7 Defense Mode

1. Enable: After door is locked, press [DEFENSE] button to enable defense mode. Voice prompt "Outside forced lock enabled". In this mode, when the door is unlocked from inside, the alarm will be triggered.  
2. Disable: Once the door is opened properly from outside, the defense mode will be disabled.

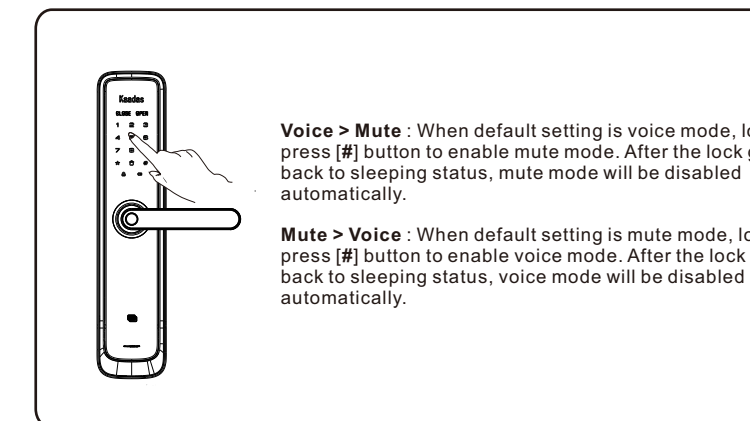


### 6.8 Safe Handle Feature



1. Enable: move the safe handle switch to display 'red' mark. Once safe handle feature is enabled, the indoor handle will be locked.  
2. Disable: move the safe handle switch to display 'green' mark. The indoor handle can be down freely.

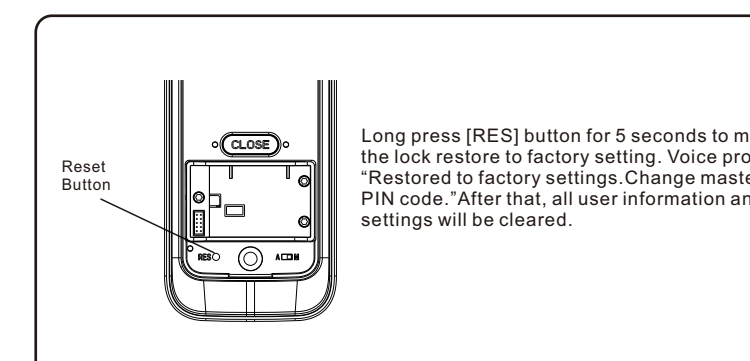
### 6.9 Mute/Voice Switch



**Voice > Mute**: When default setting is voice mode, long press [#] button to enable mute mode. After the lock go back to sleeping status, mute mode will be disabled automatically.

**Mute > Voice**: When default setting is mute mode, long press [#] button to enable voice mode. After the lock go back to sleeping status, voice mode will be disabled automatically.

### 6.10 Restore To Factory Setting

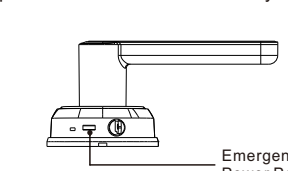


Long press [RES] button for 5 seconds to make the lock restore to factory setting. Voice prompt "Restored to factory settings. Change master PIN code." After that, all user information and settings will be cleared.

**Notes** After the lock is restored to factory setting, all users and settings will be cleared. The master PIN code will be changed into [12345678] and required for changing immediately.

### 6.11 Emergency Power Supply

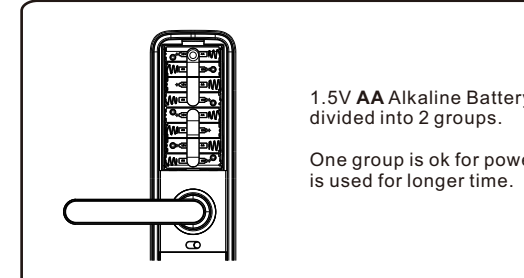
When the battery voltage is too low to open the lock from outside, you can use 5V power bank to charge the door lock via Micro USB port. After the door is unlocked, please replace all batteries immediately.



#### Notes

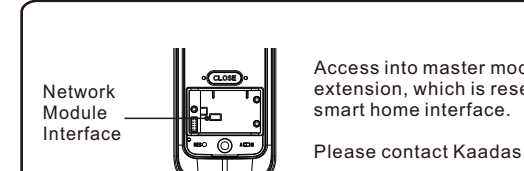
When battery voltage is lower than 4.8V, voice prompts "Low battery, please replace all batteries" at each unlocking. Please replace all batteries immediately, and do not mix old batteries and new batteries together in replacement.

### 6.12 Replace Battery



1.5V AA Alkaline Battery is required. Total is 8 pcs, divided into 2 groups.  
One group is ok for power supply, two groups is used for longer time.

### 6.13 Extended Function (optional)



Access into master mode, press [4] for function extension, which is reserved for Z-Wave and other smart home interface.  
Please contact Kaadas distributor for more details.