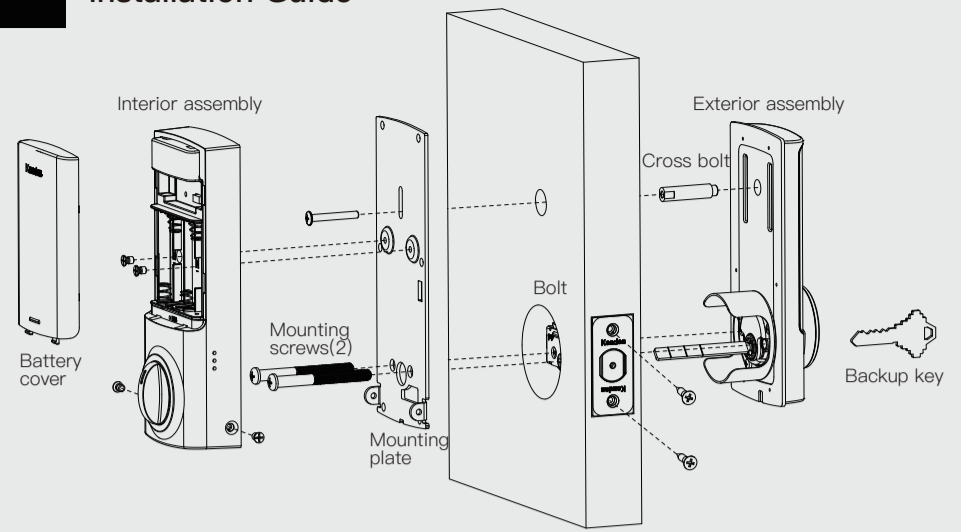


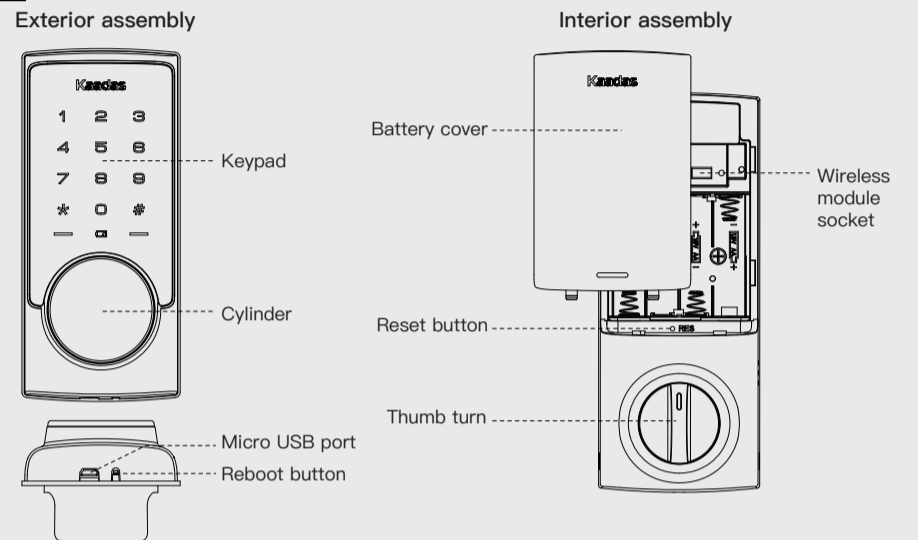
## RX-C User Manual

www.kaadasgroup.com  
Shenzhen Kaadas Intelligent Technology Co.,Ltd reserves all rights for the final interpretation to this user manual  
All design and specifications are subject to change without notice.

### 1 Installation Guide



### 2 Specifications



Item	Specifications	Remarks
Exterior assembly	158mm(L)x71mm(W)x29mm(H) 6-7/32"x2-51/64"x1-9/64"	Operation temperature: -4°F to 129°F (-20°C to 55 °C)
Interior assembly	179mm(L)x72mm(W)x47mm(H) 7-3/64"x2-53/64"x1-27/32"	
Battery	AA alkaline battery x4 (Operation voltage: 4.6-6.0V)	Last up to six month (10 times open/close per day)

### 3 Preparing for Installation

#### Additional Parts



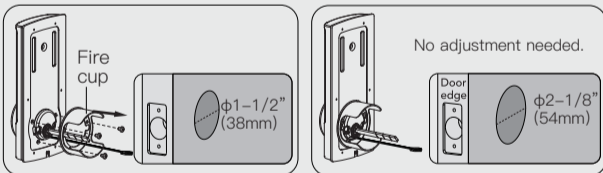
#### Tools Needed

- 2-1/8" (54mm) hole saw
- 1" (26mm) boring bit
- 7/64" (2.5mm) drill bit
- 3/8" (10mm) drill bit
- Chisel&Hammer

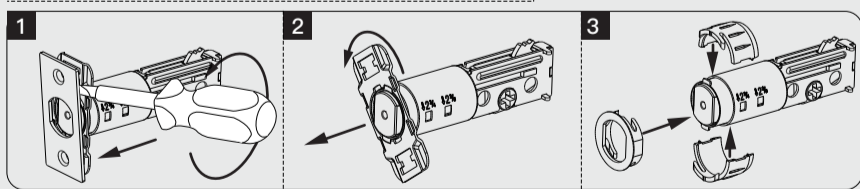
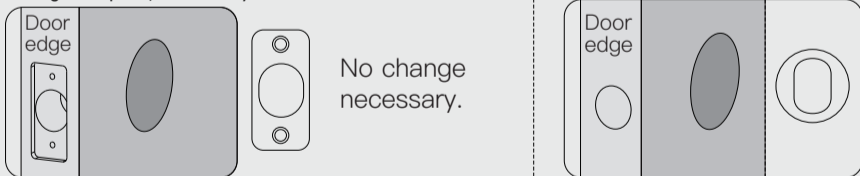
#### Lock installation #2 Philips screwdriver

**Important Notice:**  
Make sure your door is prepared prior to installation. Only drill a upper hole if you wish the lock to have added stability. Please refer to the provided template for drilling if needed.

#### A. Measure the dimension of the hole shown. If the measurement is 1-1/2" (38mm), remove the fire cup.

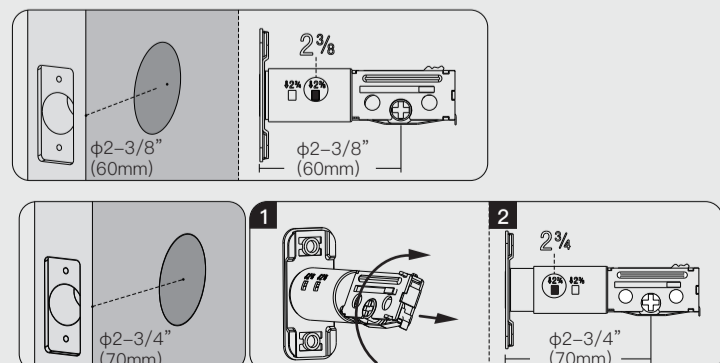


#### B. Change faceplate, if necessary.



#### C. Adjust the deadbolt.

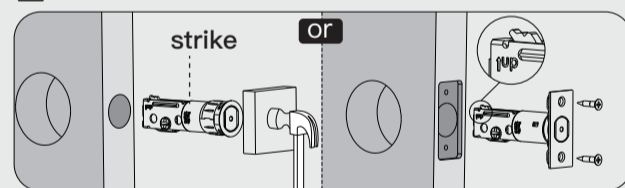
NOTE: Bolt ships with backset in 2-3/8" (60mm) position. If required, turn the bolt case and pull to extend to 2-3/4" (70mm) backset position. (see picture below)



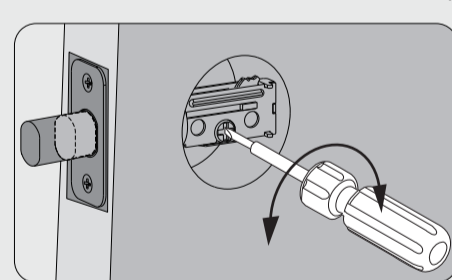
### 4 Installation

#### 1. Install strike on the door frame.

NOTE: Make sure to allow for the bolt to be centered in the strike.

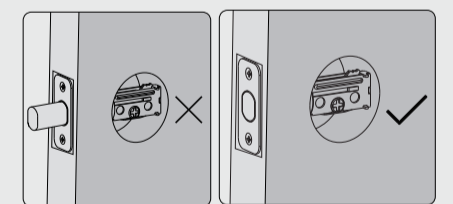


#### 2. Use a screwdriver to test if deadbolt works smoothly.

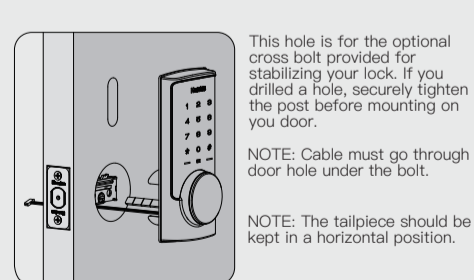


#### 3. Make sure the bolt is in retracted (unlocked) position.

NOTE: The bolt must be in retracted (Unlocked) position before installing the lockset.



#### 4. Hold the exterior assembly flush to the door, pull the key tailpiece and cable through the door hole.

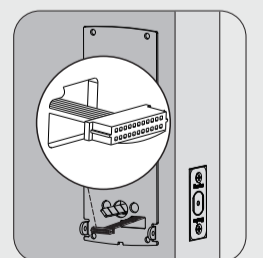


This hole is for the optional cross bolt provided for stabilizing your lock. If you drilled a hole, securely tighten the post before mounting on your door.

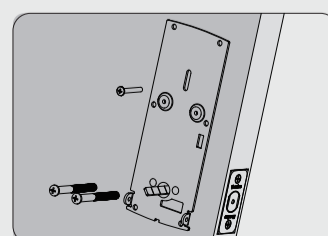
NOTE: Cable must go through door hole under the bolt.

NOTE: The tailpiece should be kept in a horizontal position.

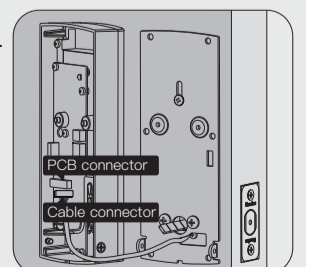
#### 5. Position the inside mounting plate by first routing the cable and connector through the mounting plate's cable hole.



#### 6. Secure both assemblies using 8/32x34 and 1/4x65 screws. Make sure that exterior assembly is vertically aligned. Tighten securely with a #2 Philips screwdriver.

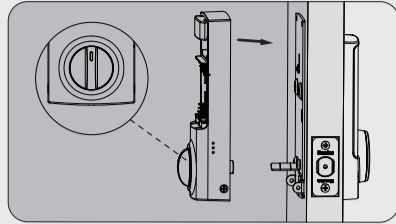


#### 7. Attach cable assembly to the interior assembly PCB by lining up notches on top of cable connector to slots on PCB connector. Press connector in firmly using thumbs until completely connected.



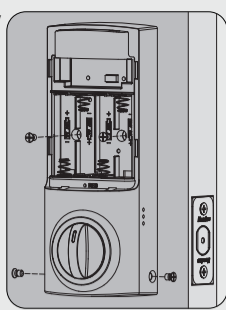
### 8. Install interior assembly on inside mounting plate.

NOTE: The horizontal orientation of the tailpiece as you insert the inside escutcheon (thumb turn should be vertical)



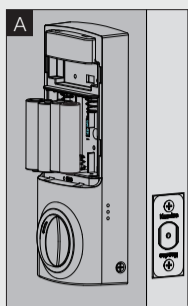
### 9. Secure using screw through the interior assembly onto the mounting plate.

NOTE: Testing operation using backup key and thumb turn before installing batteries, see if bolt works smoothly.

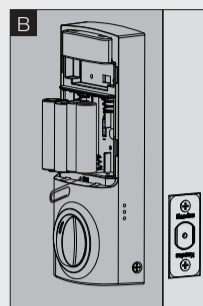


### 10. Reset the lock to learn the orientation of your door.

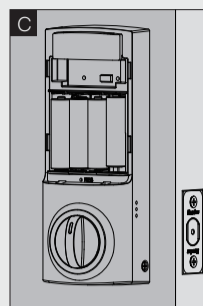
NOTE: Resetting the lock before use is required and crucial for the lock to operate properly.



Keep your lock in "unlock" status, insert 4 AA batteries in battery pack.

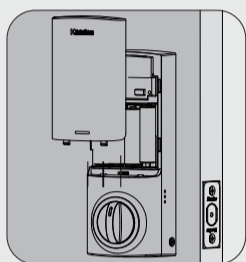


Use a sharp thing to press and hold the reset button for more than 5 seconds until hearing voice guide.

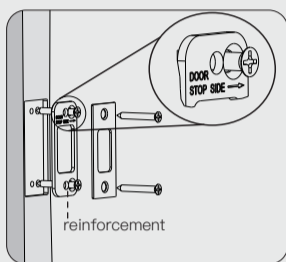


If reset is successful, the latch bolt will extend on its own to learn the orientation of the door.

### 11. Install battery cover.



### 12. Install reinforcement plate and strike into door jamb.



Congratulations, you have installed your new lock, now please follow instructions to program your lock.

## 5 Warning

- \* Failure to follow these instructions could result in damage to the product and void the factory warranty.
- \* The accuracy of the door preparation is critical for the proper functioning and security of this product. Misalignment can cause performance degradation and lessening of security.
- \* Finish Care: This lockset is designed to provide the highest standard of product quality and performance. Care should be taken to ensure a long-lasting finish. When cleaning is required use a soft, damp cloth. Using lacquer thinner, caustic soaps, abrasive cleaners or polishes could damage the coating and result in tarnishing.

### IMPORTANT: Do not install batteries until the lock is completely installed on door.

1. Master PIN Code (4-10 digit): Default master pin code is "12345678", please modify it after installation. If you forget your master pin code, you can reset your lock back to factory settings.
2. User PIN Code (4-10 digit): User pin codes can be set up through master pin code. Up to 20 user pin code can be stored.
3. Both master and user pin codes don't support the following combination of numbers.

A.	1 2 3 4 5 6 7 8 9	×	Forward number sequence
B.	9 8 7 6 5 4 3 2 1	×	Backward number sequence
C.	2 2 2 2 2 2 2 2 2	×	Repeat number sequence
D. If	5 6 8 3	✓	
Then	5 6 8 3 9 1	×	Contain existing code sequence
and	9 1 5 6 8 3	×	

## Definitions

- Master Mode**  
The master mode could be entered by entering [ \*\*+Master PIN Code+# ] to program the lock.
- Master PIN Code:**  
The master pin code is used for programming and for feature settings.
- Auto Re-lock:**  
After successful pin code entry and the unit unlocks, it will automatically re-lock after 30 seconds. This feature is disabled in default setting.
- Manual Mode:**  
Auto re-lock function could be adjusted to manual mode. In manual mode the lock could be locked only by pressing any key for 2 seconds from outside or using thumb turn from inside.
- Shutdown Time:**  
The lock will shutdown for a default of 3 mins and not allow operation after the wrong code entry limit (10 times) has been met. When the unit is in shutdown, the light will flash when you are trying to use keypad.
- Silent Mode:**  
The beeper will not make any voice.
- Status indicators:**  
Located on exterior assembly.
- User PIN code:**  
The user pin code operates the lock. Maximum capacity of user pin codes is 20.
- Reset button:**  
After reset operation, the lock will be restored to factory default settings, all user credentials will be deleted. Refer to reset guide.

## 7 Factory Default settings

Settings	Factory Default
Master PIN Code	12345678
Auto Re-lock	Disabled
Beeper	Enabled
Wrong Code Entry Limit	10 times
Shutdown Time	3 mins

## 8 Lock Operation

### Change Master PIN code

1. Touch the screen with your hand to activate.
2. Enter "\*" twice and the 4-10 digit Master PIN Code followed by "#". Lock Response: Voice guide.
3. Enter "1" to change Master PIN Code. Lock Response: Voice guide
4. Enter new 4-10 digit Master PIN Code followed by "#".
5. Repeat step 4 one more time.

#### CAUTION

Before changing default Master PIN Code, all other setting menu will be disabled. You have to change Master PIN Code first, then do other lock settings.

### Add up User PIN codes

1. Touch the screen with your hand to activate.
2. Enter "\*" twice and the Master PIN Code followed by "#". Lock Response: Digit 1-8 one keypad light up.
3. Enter "2" Lock Response: All keys on keypad light up.
4. Enter the User Number to be registered (00-19) followed by "#".
5. Enter new User PIN code followed by "#".
6. Repeat step 5 one more time.
7. To continue adding users, do previous steps 4-5 again.

#### CAUTION

When registering User PIN codes, the code must be entered within 10 seconds or time expires. No matter setting succeed or failed, the process won't be completed and stay at current stage, you can press "\*" to return to previous menu.

### Delete User PIN codes

1. Touch the screen with your hand to activate.
2. Enter "\*" twice and the Master PIN Code followed by "#". Lock Response: Digit 1-8 one keypad light up.
3. Enter "3" Lock Response: All keys on keypad light up.
4. Enter the User Number (00-19) or User PIN code to be deleted followed by "#". Lock Response: Voice guide.
5. To continue deleting users, do previous steps 1-4 again.

#### CAUTION

When deleting User PIN codes, the User Number must be entered within 10 seconds or time expires. No matter setting succeed or failed, the process won't be completed and stay at current stage, you can press "\*" to return to previous menu. Deleting all User PIN codes could be done only by resetting the lock to factory default settings.

### Auto Re-lock enable/disable

Auto Re-lock feature can be programmed through the Master PIN Code or APP.

1. Touch the screen with your hand to activate.
2. Enter "\*" twice and the Master PIN Code followed by "#". Lock Response: Digit 1-8 one keypad light up.
3. Enter "4" Lock Response: Digits 1 and 2 on keypad light up.
4. Enter "1" to enable, enter "2" to disable. Lock Response: Voice guide.

### Silent Mode (Speaker enable/disable)

Silent Mode feature can only be programmed through the Master PIN code or APP.

1. Touch the screen with your hand to activate.
2. Enter "\*" twice and the Master PIN Code followed by "#". Lock Response: Digit 1-8 one keypad light up.
3. Enter "5" to set up languages. Lock Response: Digits 1-6 on keypad light up.
4. Enter "1" or "2" or "3" or "4" or "5" to select voice guide language (Silent Mode disable), enter "6" to enable Silent Mode.

### Enable Away Mode

Away Mode feature can only be programmed through the Master PIN code.

1. Touch the screen with your hand to activate.
2. Enter "\*" twice and the Master PIN Code followed by "#". Lock Response: Digit 1-8 one keypad light up.
3. Enter "6" to enable.

#### CAUTION

In Away Mode, all User PIN code will be disabled temporarily, device could be unlocked only by Master PIN code or APP. Away Mode will be disabled automatically after entering Master PIN code or using APP access. If someone unlocks the unit by using thumb turn or override key (optional), the speaker will give an alarm.

### Bluetooth settings

Bluetooth feature can be programmed through the Master PIN code or APP. Bluetooth is disabled in factory default setting.

1. Touch the screen with your hand to activate.
2. Enter "\*" twice and the Master PIN Code followed by "#". Lock Response: Digit 1-8 one keypad light up.
3. Enter "7" to enter Bluetooth settings.
4. Enter "1" to enter Bluetooth, Bluetooth will work continuously after operation.
5. Enter "2" to disable Bluetooth, Bluetooth will shut down in 2 mins after touch keypad lights off for energy saving, it will back to work when touch keypad wakes up.

### Function extension settings (optional)

Network features are included in function extension, can only be programmed through the Master PIN code.

1. Touch the screen with your hand to activate.
2. Enter "\*" twice and the master PIN Code followed by "#". Lock response: Digit 1-8 one keypad light up.
3. Enter "8" to join network.
4. Enter "1" to log in network.
5. Enter "2" to log out network.

#### CAUTION

If the lock is connected to a network controller, it is recommended that it is programmed through the centralized user interface (PC or hand-held device) to ensure communication between the lock and the controller.

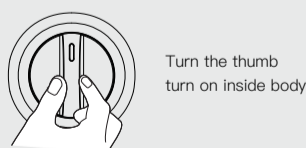
## 9 How to use

### Unlock the door

1. Unlock the door from outside  
Master/User pin code or key.



2. Unlock the door from inside  
Manual thumb turn



### Lock the door

1. Lock the door from outside

#### Normal

In Auto re-lock mode, the bolt will extend out automatically in 30 seconds after unlocking.

#### Manual Mode

Press any key on keypad for 2 seconds.

2. Lock the door from inside

#### Auto Re-lock Mode

In Auto re-lock mode, the device will be locked automatically.

#### Manual Mode

The device could be locked by turning the thumb turn on inside body.

### Unlock with Fake PIN code

8361813719214710  
password

Random digits

User can prevent pin code exposure from strangers by entering random digits before or after pin code.

### Reset to factory default settings

1. Operation on lock
1. Open battery box and keep the lock in "unlock" status.
2. Open battery box and find the reset button.
3. Use a sharp thing to press and hold the reset button.
4. Keep holding the reset button and remove a battery from battery box then replace it.
5. Keep holding the reset button for another 3 seconds until voice guide.